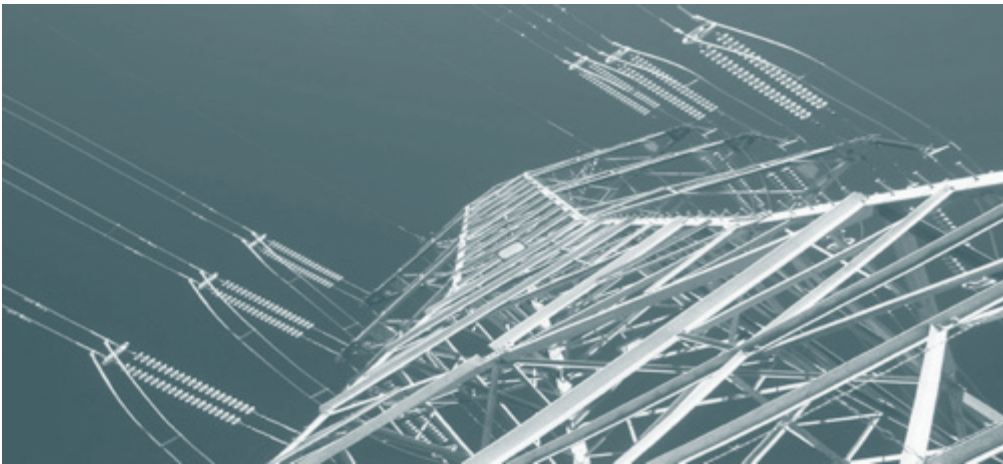


# OPERATIONS & MAINTENANCE



- ✓ ASSET MANAGEMENT
- ✓ FIELD MAINTENANCE
- ✓ INSPECTION & ASSESSMENT

*Australian Power Industry Partners deliver 'turn-key' high voltage transmission and distribution electrical solutions.*

## ACHIEVING SUSTAINABLE ASSET PERFORMANCE AND RELIABILITY

Australian Power Industry Partners (APIP) are High Voltage Electrical Transmission and Distribution Specialists.

APIP's strength is in Asset Management of High Voltage Infrastructure. Early engagement enables the entire life cycle to be considered in the development of optimal energy asset solutions.

With a focus on Transmission and Distribution Assets we play to our strengths in providing uncompromising quality in HV asset service delivery.

Our industry expertise and skilled workforce are uniquely qualified to work with network and asset owners.

APIP delivers fully integrated, cost effective Field Works Programs for a range of equipment including:

- Overhead and Underground Power Lines and Cables;
- Substations and Switchyards;
- HV Supporting infrastructure;
- Automation, Protection, Measurement equipment; and
- Communications and Control.

APIP Field Works teams deliver Transmission and Distribution Refurbishment and Replacement Brownfield works, in addition to Maintenance and Greenfield projects.

Drawing upon our extensive experience and specialist industry knowledge, APIP Field Works:

- Extend the useful life of assets;
- Reduce Cost and Risk;
- Increase Asset Reliability; and
- Optimise Works Delivery.



### ASSET MANAGEMENT

An APIP Asset Management System (AMS) targets the most cost effective lifecycle management of the assets whilst ensuring performance standards are met. The AMS will detail the optimal planning, design, maintenance, refurbishment, and replacement / disposal activities to achieve this goal.

APIP develop Asset Management Systems in alignment with PAS 55 and the ISO 55000 family of standards, with the APIP AMS capable of being integrated with other existing business systems, for example ISO 9001 / ISO 14001 and ISO 31000.

Components of an APIP AMS:

- AMS Framework and Documentation
- Asset Management Policy
- Strategic Plan for Asset Management and
- Asset Management Plans (AMPs).

We work with our clients' existing business systems to ensure synergies with their current work practices across their organisation, which minimises disruption, duplication and cost.

APIP AMPs include the asset management activities and reference the supporting business processes required to achieve the effective management of the clients' assets, including:

- Continuous Improvement
- Risk Management
- Emergency Response
- Reliability and Performance Analysis, and
- Inventory Management.



## INDUSTRY TRAINED AND LICENSED ELECTRICAL WORKERS

### FIELD MAINTENANCE

Maintenance services support the achievement of optimal life cycle costs and the realisation of high voltage asset potential.

APIP harnesses the evolving Operational Technologies (OT) being implemented within the high voltage environment to achieve:

- Asset performance trending
- Remote fault diagnostics and reduced dependency on site attendance;
- Planned Routine Maintenance;
- Condition Based Maintenance;
- Pre-emptive component replacement prior to failure; and
- Cost effective decision making.

### INSPECTION & ASSESSMENT

Effective management of a client's assets begins with an accurate understanding of the asset condition.

With a vast array of expertise and experience gained through performing asset condition assessments, APIP delivers assessments in a timely and efficient manner for input into condition based reliability and maintenance processes and systems. Enabling asset routine inspection intervals and maintenance policies to be optimized, APIP delivers:

- Asset Condition Assessments;
- Site Inspections and Auditing; and
- Performance reporting.

*Australian Power Industry Partners*

Phone: 1300 396 826

Email: [admin@apip.com.au](mailto:admin@apip.com.au)

[www.apip.com.au](http://www.apip.com.au)